

PRICE LIST RETAINING WALLS

PANELS

Full	Cream / Limestone Panel	(65kgs)	1510mm long x 300 mm high (approx)
Half	Cream / Limestone Panel	(35kgs)	1510 mm long x 150 mm high (approx)
Centre post to centre post	Cream / Limestone Panel		1600mm (approx)
Smooth Cream/Limestone	Trafficable Panel	(35kgs)	750mm long x 300mm high (approx)
Centre post to centre post	Trafficable Panel		800mm (approx)
Full	Stone Range Panel	(75kgs)	1500 mm long x 285 mm high (approx)
Centre post to centre post	Stone Range Panel		1585mm (approx)

PRICES

	Smooth Cream	Limestone Finish	Smooth Grey or Charcoal	Stone Range Cream	Stone Range Charcoal
Full Panel	\$42	\$44	\$60	\$55	\$60
Half Panel	\$34	\$36	\$49		
Triangle panel	\$34	\$36	\$49		
Trafficable Panel	\$34	\$36	\$49		

POSTS

Wall Height (mm)	Post Length (mm)	Cream Straight Post	Charcoal Straight Post	Weight (Approx)	Steel Beam Post	Weight (Approx)
300	600	\$38	\$43	20.6 kg	\$60	8.90 kg
450	900	\$44	\$48	30.8 kg	\$68	13.35 kg
600	1200	\$49	\$53	41.1 kg	\$76	17.80 kg
750	1500	\$55	\$58	51.4 kg	\$82	22.20 kg
900	1800	\$60	\$62	61.7 kg	\$89	26.70 kg
1050	2100	\$65	\$69	72.0 kg	\$96	31.00 kg
1200	2400	\$71	\$76	82.2 kg	\$104	35.50 kg
1350	2700	\$79	\$83	92.5 kg	\$113	40.00 kg
1500	2700	\$79	\$83	92.5 kg	\$113	40.00 kg

\* All prices are fully inclusive of GST

\* Installation and delivery can be quoted on request

\* Prices are collect at Bradford premises, Landsdale

\* Office & Display open: 8:00 am - 4:00 pm Weekdays

\* Load ups 8am to 3pm Weekdays

\* \$5 extra per concrete corner, end, T, 45° posts

\* Prices subject to change without notification

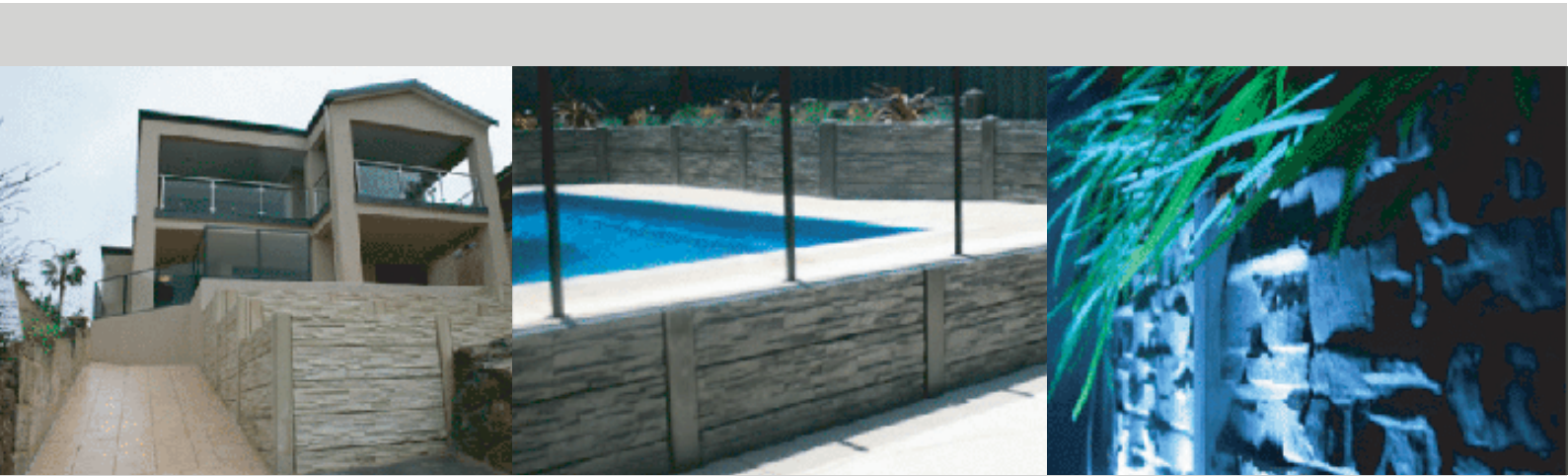
\* Weights and post centres are approximate only

\* Tolerances of up to 10mm +/- may be found with the Stone Range

\* Engineer Designed and Shire Approved

NOTE: We do not accept returns - unless approved by Management. A handling fee for re-stocking will apply.

BRADFORD  
RETAINING  
RETAINING THE WAY



PRECAST PANEL & POST WALL SYSTEMS

COMMERCIAL & DOMESTIC

Retaining walls  
Fencing  
Commercial sound barrier walls  
Retaining up to 2.40M  
Shore piling & temporary walling

Wall features  
Water features  
Privacy screen wall  
Garden edging

08 9309 1933  
27 Rogers Way, Landsdale WA 6065  
sales@bradfordretaining.com.au  
www.bradfordretaining.com.au

# BRADFORD RETAINING SUPPLYING WA’S TOP BUILDERS AND COMMERCIALS

# BRADFORD RETAINING PTY LTD PRECAST CONCRETE PANEL AND POST RETAINING WALLS DESIGN NOTES AND SPECIFICATIONS



Supplying and installing concrete panel and post retaining walls to the Perth market since 1979. Bradford Retaining have become market leaders in design and innovation releasing its new Stonerange panels whilst continuing to provide cost effective solutions for all walling requirements.

## THE INFORMATION SUPPLIED IS TO ASSIST THE SUPPLIER AND INSTALLER OF BRADFORD RETAINING WALL PRODUCTS. PRODUCT SPECIFICATIONS INCLUDING:

- 1) engineering;
- 2) proposed wall and fence location and conditions;
- 3) general installation techniques, and;
- 4) after job care and maintenance.

Bradford concrete panel and post retaining walls offer a cost effective retaining solution compared to other retaining types and offer significant space saving advantages. They are lightweight and easily installed manually.

Materials must be handled and installed as per Bradford engineering notes and details ensuring a quality finish to your retaining wall project. If guidelines are not followed closely (particularly backfilling and after care) the walls may be prone to slight movement or failure.

Generally, any retaining wall over 500mm high has to have a building license. It is recommended to contact your local Shire or Bradford Retaining for further information prior to job commencement.

This must be to the full depth of the post footing. When walls are installed along boundaries where existing fences have been removed, or the ground has been disturbed, it is common to machine and water compact the area prior to installation.

All backfill to walls to be clean granular free draining soil. Avoid any trenching or disturbing of ground in front of new wall before/after backfilling. Any walls to be installed where watertable is higher than max post depth to consult engineer.

Clay site walls must have Bradford Drainage panel or suitable blue metal drainage. REFER TO ENGINEER DETAILS

All walls to be installed in coastal cyclone rated areas must be installed as per Engineer and Local Shire requirements.

Any loading, surcharge after the normal level backfill to top of wall must be a minimum 1.2 times the height retained. For example, a 900mm high wall would have a minimum setback of 1080mm.

Greater post embedment, double posting and deeper house footings are ways a closer setback can be achieved. REFER TO BRADFORD DESIGN AND SALES.

It is common to have terraced walls to achieve greater overall height and create split level feature garden beds.

No fences to be installed on top of a wall greater than 1200mm unless the standard walling has been strengthened above normal engineering.

For any post and rail fencing a Bradford Top Rail panel or backing panel are to be used REFER TO ENGINEERING

## BACKFILLING AND AFTER JOB CARE

Correct procedures must be followed to ensure your new wall does not fail or suffer damage.

Full backfilling and compaction no less than 5 days after wall completion. Manual backfill and water compaction is a preferred method as the walls are easily damaged by machines.

If the wall must be machine backfilled from the top they are to be no closer than 1.2 times the retained height. The machine must not brake quickly driving up to a wall as it puts significant loads on the wall. Filling from the top or bottom of the wall bucket loads are to be emptied slowly and carefully reducing a full load dump against the wall.

Propping of each post and centrally against the panels can be used to further prevent movement and damage to walls if mechanically backfilled.

Large plate compactors to be no closer than 1.2 times the retained height. Small plate compactors can be used but must be at least 300mm from all wall sections.

Bradford Retaining products can be sealed for anti-graffiti purposes and to enhance your finished product. Whilst Bradford offer advice, there are a number of sealants available on the market with various application scenarios. We recommend the owner research and learn about what is best suited for their job before sealing their wall. Should you seek any further advice contact the friendly staff at Bradford Retaining

## GENERAL DESCRIPTION

Bradford Retaining Walls are precast reinforced concrete panel and posts. Manually assembled on site with standard engineering allowing a maximum retained height of 1500mm.

Standard “H” post sizes are 130mm x 130mm up to 2700mm long. Holes are dug manually or by machine and the posts are set in place with concrete or other footing type mixes. Posts also come in Corners, Ends and “T” sections. The posts are set with a slight lean towards the retained earth, approx a half bubble on a hand level. Post embedment must be equal to, or greater than, the retained height REFER TO ENGINEER DETAILS.

Standard panels are 300mm wide x 1520mm long x 60mm thick providing 1600mm post centers. They are slid down horizontally into the set posts. There are half panels 150mm wide and triangle panels 300mm – 60mm wide used for step downs in height. Trafficable panels are also available which are 300mm wide x 760mm long providing 800mm post centers that are used when excessive loading is required, vehicular surcharge etc.

All Bradford Retaining Panels and Posts have hot dipped galvanized reinforcement throughout. Strengthening and waterproofing additives are added during the batching process to provide a superior product.

## LOCATION AND APPLICATION CONDITIONS

Walls must be installed in natural undisturbed sand or compacted fill which has a compaction equal to, or greater than, 6 blows with a Perth Sand penetrometer.

## OBLIGATION FREE QUOTES & GUARANTEED SERVICE

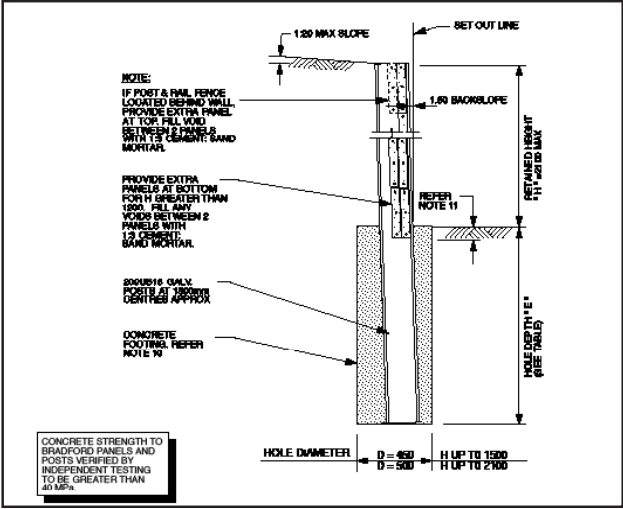


Bradford Retaining are the only company in Australia offering a choice of stunning designs and colours. Our product supply and installation services are available Statewide. View our Website or call 08 9309 1933 now for product information and our sales services.



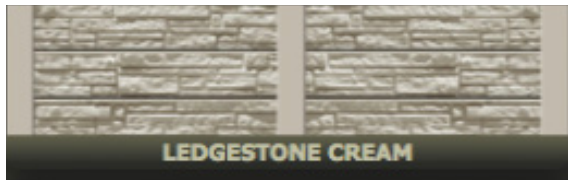
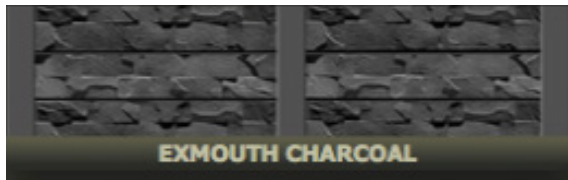
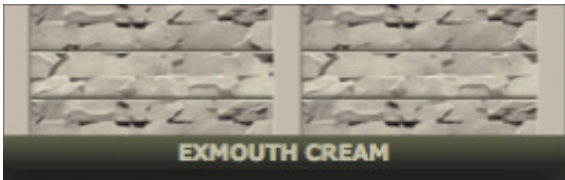
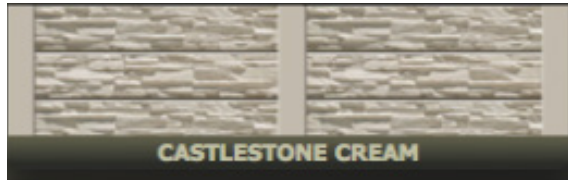
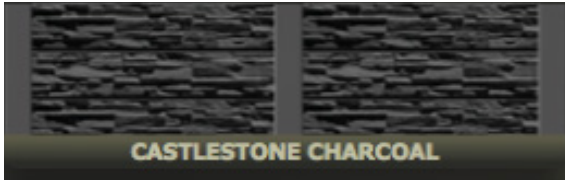
BRADFORD ENGINEERING & COMMERCIAL PRECAST PANEL & POST WALL SYSTEMS

BRADFORD ENGINEERING & COMMERCIAL PRECAST PANEL & POST WALL SYSTEMS



Ask now for information on Bradfords latest claystie engineering reducing costs of all walling up to 30% And Commerical Shore Piling & Temporary Walling applications now reducing project costs by up to 50%.

## STONE RANGE

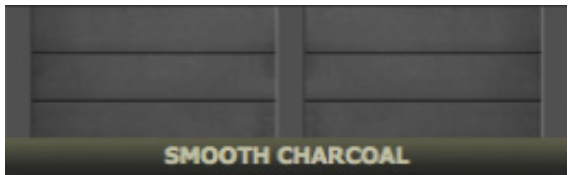
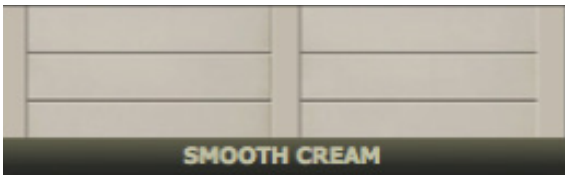
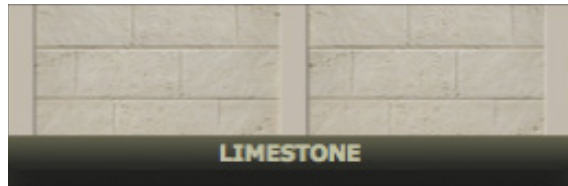


## BRADFORD RETAINING COMMERCIAL INFO



Retaining Walls up to 3000mm high  
Commercial Sound Barrier Walls  
Shire Approvals & Engineering  
Certified Galvanized Steel  
Reinforcing Throughout Complete  
Project Management Shore Piling &  
Temporary Walling Installations JSA &  
OH&S Trained Technical Advisors to  
the Builders Registration Board.

URBAN RANGE





## LATEST DESIGNS AT COST EFFECTIVE PRICES



Whether its retaining walls, fencing, privacy screen walls, garden edging or you want something that has a bit more character. Our experienced team can provide you with advice on design, engineering and coming up with cost effective ways to achieve your goals.

## OBLIGATION FREE QUOTES & GUARANTEED SERVICE



Specializing in project management & commercial developments Bradford Retaining's estimating, design & engineering service ensures a professional start to finish with every project.